

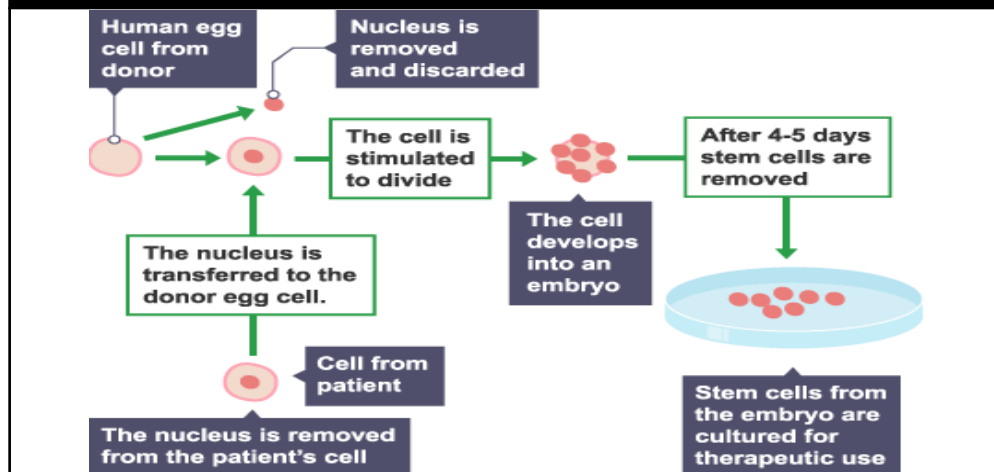
# Biology Kerboodle: B2 Cell Division

Name: \_\_\_\_\_

## 1. Keywords Cell division

Chromosomes	Long strands of DNA containing genes. Found in 23 pairs in a human
Cell cycle	The process the cell goes through to divide
Mitosis	A type of cell division that creates 2 identical daughter cells
Stem Cell	A cell that has not undergone differentiation to become specialised.
Embryonic Stem Cells	Stem cells collected from the embryo-will differentiate into any cell type.
Adult Stem Cells	Differentiate into only related cells
Meristem	Region of plant where cell division and differentiation occurs (tip of roots and shoots)
Therapeutic cloning	Using an embryo to create stem cells with the same genes as the patient. Controversial (potential to grow organs, but use/destroy embryos produced by IVF)

## 3. Therapeutic Cloning



## 2. Stages of mitosis

