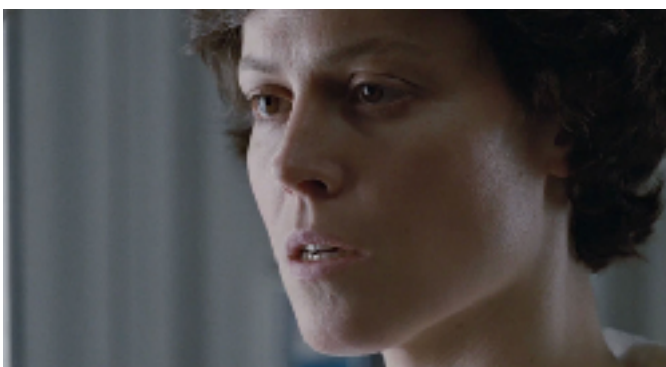


NAME:

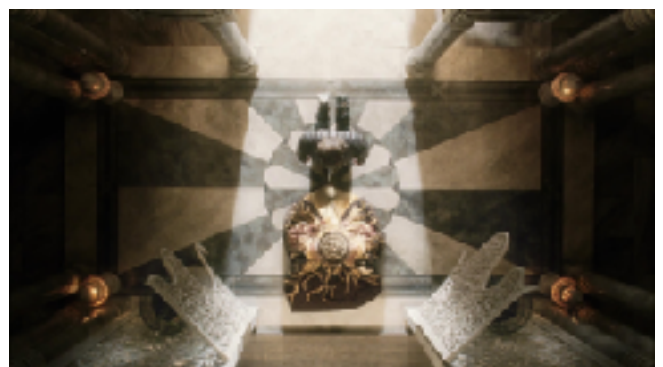
TIMELINE QUIZ 1

SCORE:

1. First moving images (Lumière brothers) [1]
2. Development of silent cinema from early short films to full-length feature films [1]
3. Gradual emergence of a vertically integrated Hollywood film industry, established by 1930 into five major studios [1]
4. Alan Crosland's, *The Jazz Singer*, starring Al Jolson - the first feature film with a soundtrack [1]
5. Rouben Mamoulian's *Becky Sharp*, the Technicolor Corporation's first feature length, 'three strip' colour film [1]
6. Paramount court case which prevented studios from owning all phases of the production, distribution and exhibition process [1]
7. Emergence of widescreen and 3D technologies [1]
8. Lightweight, portable cameras were produced suitable for hand-held use [1]
9. Steadicam technology developed by cinematographer Garrett Brown [1]
10. More widespread use of computer-generated imagery, most significantly pioneered by Industrial Light and Magic [1]
11. What is this shot size? [1]
12. What does this shot size normally suggest? [1]
13. What is this camera angle? [1]
14. What does this camera angle usually suggest? [1]
15. What type of sound cannot be heard by the characters in the film? [1]



Q11



Q13