

VOCATIONAL



1 / 2 AWARD in
CONSTRUCTING THE
BUILT ENVIRONMENT

REGULATED BY OFQUAL AND CCEA REGULATION
DESIGNATED BY QUALIFICATIONS WALES



Gain an insight and skills into different trades:

- Carpentry
- Plastering
- Electrical engineering
- Tiling
- Brick Laying
- Painting & Decorating





WJEC Level 1/2 Vocational Award in Constructing the Built Environment

Unit Number	Unit Title	Assessment	GLH
1	Safety and security in construction	External	30
2	Developing construction projects	Internal	60
3	Planning construction projects	External	30



External assessment

Unit 1: Safety and security in construction will be externally assessed. Details of the external assessment are as follows:

- 60 minute examination;
- Total of 60 marks;
- Online assessment;
- Short and extended answer questions, based on stimulus material and applied contexts;
- Each question will have an applied problem solving scenario;
- Graded Level 1 Pass, Level 2 Pass, Level 2 Merit and Level 2 Distinction.



External assessment

Unit 1: Safety and security in construction will be externally assessed.

1. Know health and safety legal requirements for working in the construction industry
2. Understand risks to health and safety in different situations
3. Understand how to minimise risks to health and safety
4. Know how risks to security are minimised in construction



External assessment

Unit 3: Planning construction projects. Details of the external assessment are as follows:

- 120 minute examination
- Total of 60 marks
- Online assessment
- Each task will have an applied problem solving scenario
- Graded Level 1 Pass, Level 2 Pass, Level 2 Merit and Level 2 Distinction.

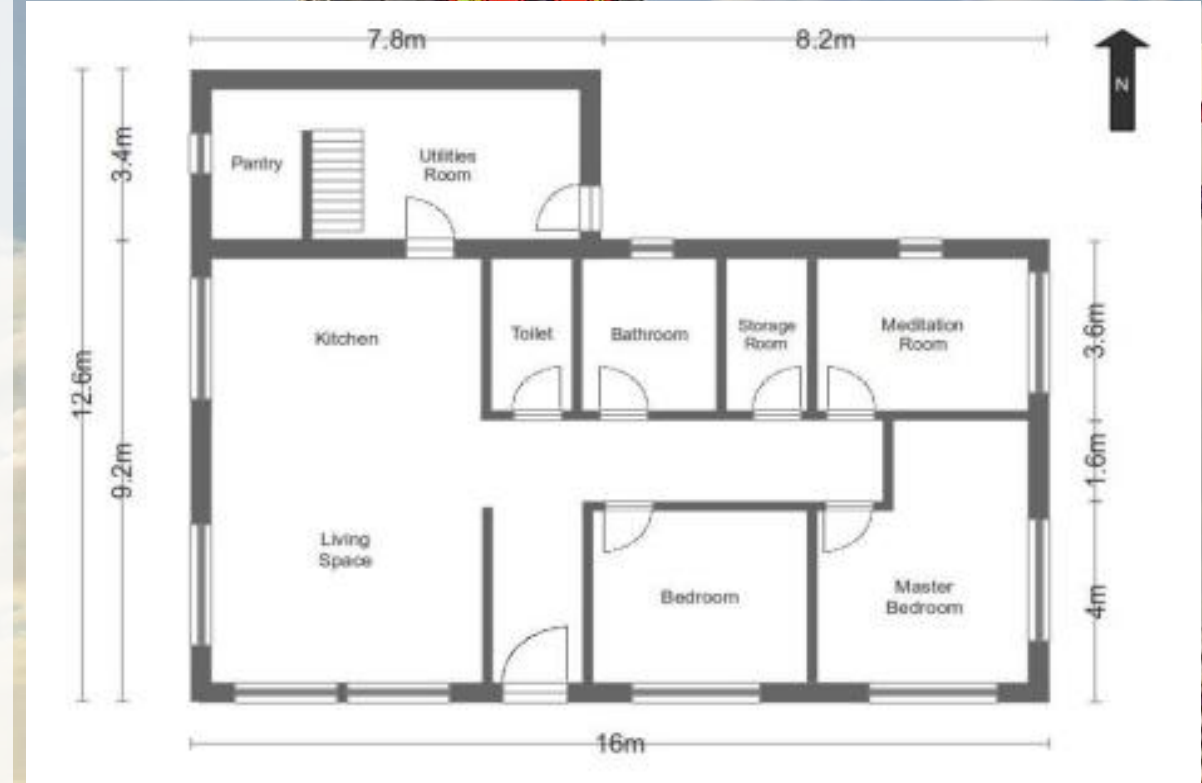


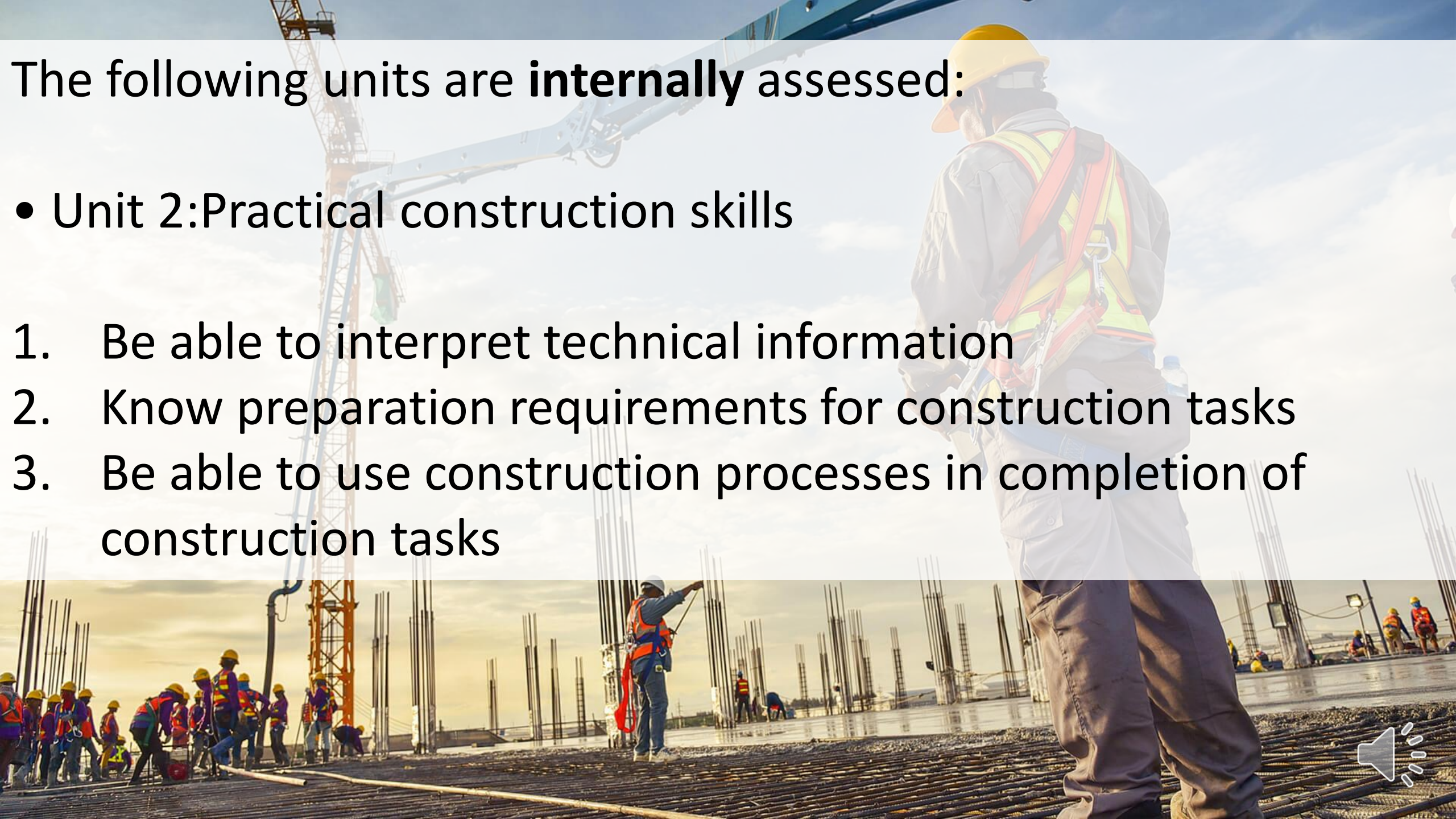
External assessment

Unit 3: Planning construction projects

The Learning objectives for this unit are:

1. Know job roles involved in realising construction and built environment projects
2. Understand how built environment development projects are realised
3. Be able to plan built environment development projects





The following units are **internally** assessed:

- Unit 2: Practical construction skills

1. Be able to interpret technical information
2. Know preparation requirements for construction tasks
3. Be able to use construction processes in completion of construction tasks



Unit 2: Practical construction skills

Learn a basic introduction into skills to assist you in taking a course or apprenticeship in a specific construction trade:

- Carpentry
- Plumbing
- Tiling
- Painting & Decorating
- Electrical wiring

