



Performing Arts

- Drama
- Performing Arts
- Music

Drama

Key Stage 3

Drama at Southchurch High School begins in Year 7. All Key Stage 3 students have an hour drama lesson every week. Our Drama lessons encourages students to work imaginatively and creatively in a collaborative context. The balance between creativity, solid commitment and expressing oneself is intrinsic to personal development. We explore a number of key skills that are not just fundamental to Drama achievement but are core social and moral qualities. We aim to support learners to discover new talents, boost confidence and self-esteem, and provide them with a voice that they can take into all lessons, all subjects, and use within everyday life.

The focus at Key Stage 3 is the development of the core skills known as the 5Cs. These are Confidence, Co-operation, Creativity, Communication and Control. Students gain an understanding of the various forms of Drama, through practical lessons. They are encouraged to challenge ideas through issue based devised work, script interpretation and mime to music. They also study a variety of theatre forms such as physical theatre, melodrama and comedy improvisation. A favourite with students being our Trestle mask work and Theatre in Education schemes.

Year 7 Drama

Autumn 1 New Skills

Autumn 2 Scripts & Panto

Spring 1 Wild West

Spring 2 Stanislavski

Summer 1 Haunted House

Summer 2 Musical Theatre

Year 8 Drama

Autumn 1 Murder Enquiry

Autumn 2 Scripts

Spring 1 Mime & Trestle Masks

Spring 2 Physical Theatre

Summer 1 Tie

Summer 2 Drama into Industry -
Commercial 2 & Stage Make-up

Throughout Key Stage 3 & 4 Students will use a range of Explorative strategies, Drama Mediums, Elements of Drama and Forms of Stimuli:

Strategies:

- Still image
- Narrating
- Role play
- Hot-seating
- Thought-tracking
- Cross-cutting

Mediums:

- The use of costume and/or music
- The use of lighting props
- The use of voice
- The use of masks and/or make-up
- The use of space and/or levels
- The use of movement, mime and gesture
- The use of sound
- The use of set and/or

Elements:

- Action/plot/content
- Rhythm/pace/tempo
- Forms
- Characterisation
- Climax/anti-climax
- Contrasts

Forms of stimuli

- Artefacts: photographs, pictures, masks, props, costume, sculpture
- Extracts from literary fiction and non-fiction
- Live theatre performance
- Newspaper and magazine articles
- Play scripts
- Music
- Poetry

Key Stage 4 Performing Arts (Acting & Musical Theatre)

Key Stage 4 Drama is continued through BTEC Performing Arts – Acting and Musical Theatre pathways.

To follow the Edexcel BTEC Performing Arts Course you will be expected to:

- Work alongside other students in creating and performing work;
- You must be prepared to attend rehearsals
- Either be part of a choir, dance club, or School production club
- Ability to give and receive constructive feedback.
- Be prepared to evidence your practical work in a portfolio of coursework and project based research

The Current Yr11 students are studying BTEC First Award

(this qualification is in its final year)

Students study 3 Units:

Unit 1: Individual Showcase (25% - External)

Unit 2: Preparation Performance and Production (25% - Internal)

Unit 3: Acting Skills (50% - Internal)

Our current Yr9 & 10 and all future BTEC groups will follow the new BTEC TECH AWARD. As with the BTEC First Award this is a vocational qualification.

The qualification is made up of 3 components and builds on skills studied through exploring practitioners and professional performance work.

Component		Assessment type	Overview
1	Exploring the Performing Arts	Internal	You will develop your understanding of the performing arts by examining practitioners' work and the processes used to create performance.
2	Developing Skills and Techniques in the Performing Arts	Internal	You will develop your performing arts skills and techniques through the reproduction of Musical Theatre repertoire.
3	Performing to a Brief	External	You will be given the opportunity to work as part of a group to create a workshop performance in response to a given brief and stimulus from the exam board.

Extra Curricular –

Annual School Production Club -

There is a whole school musical production every year that all students can participate in as actors, dancers and in back stage roles. This is a fully inclusive venture where students of all ages and levels of experience work side by side. It is said that our performance groups become a 'family' through rehearsals, with students supporting each other to be their best.

Previous school productions include:

- Oliver
- Hairspray
- We Will Rock You
- Wizard of Oz
- Grease
- Lion King
- Bugsy Malone



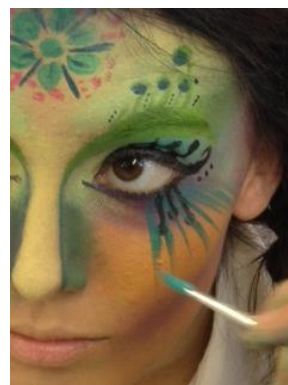
Dance Club – Our dance club meets weekly. Dances are created for events such as the Jack Petchey Awards Evening, school Open Evenings and various other performance opportunities. The dance club supports the annual school production.

Modern British Value

British values are intrinsic to the work that we do in the Drama curriculum. Working in groups; co-operation, motivation and respect is the basis of the learning, which encourages the students to develop patience and esteem within themselves and towards others. The topics we cover celebrate, highlight and acknowledge historical events, British theatre, playwrights and film giving the students a breadth of knowledge and understanding of the country that they live in. The combination of self-discovery supported by the rich history, culture and performance art that we have in Britain provides students with a well-rounded subject to enjoy and learn from.

Modern British Value in Drama

British values are intrinsic to the work that we do in the Drama curriculum. Working in groups; co-operation, motivation and respect is the basis of the learning, which encourages the students to develop patience and esteem within themselves and towards others. The topics we cover celebrate, highlight and acknowledge historical events, British theatre, playwrights and film giving the students a breadth of knowledge and understanding of the country that they live in. The combination of self-discovery supported by the rich history, culture and performance art that we have in Britain provides Drama students with a well-rounded subject to enjoy and learn from.



Music

Music is at the heart of everything and remains an important part of our daily lives. At Southchurch, we believe that music can reach out to all individuals and allow them to express themselves in a multitude of ways.

Music is for everyone, of all ages and whatever genre of music they love to listen to. During your music education at Southchurch, many topics are covered to give you the best musical education in preparation for your future.

Year 7 Topics

- Autumn Term 1 - Elements of Music – Pitch Notations and Rhythms in music
- Autumn Term 2 - Instruments of the Orchestra
- Spring Term 1 - Theme and Variation
- Spring Term 2 - Song Writing
- Summer Term 1 - Graphic Score
- Summer Term 2 - Programme Music

Year 8 Topics

- Autumn Term 1 - Rhythm and Pitch – Advanced Techniques
- Autumn Term 2 - Opera
- Spring Term 1 - Scales and Chords – How to compose a piece of music with structure
- Spring Term 2 - Music and the Media
- Summer Term 1 - Indian Music
- Summer Term 2 - African Music – African Drumming

Year 9, 10 & 11 BTEC Music

The Year 9, 10 and 11 BTEC Music students follow a well-planned and structured syllabus with assignments to be completed within a given guided learning hours time frame.

The students will have the opportunity to compose music on new PC's with the latest version of Sibelius compositional programme. Students will be given the opportunity to develop their compositional skills which they have been building on during KS3. They will compose music in a variety of genres, exploring their musicianship and creativity.

The workload for BTEC Music is predominantly coursework based and this allows our students to control their work load but also learn how to adhere to deadlines and become independent learners. Students will be given log books and diaries to record the progress they have made from lesson to lesson and will provide an excellent form of communication between teacher and student.

The Units taught during the course are:

- Unit 1 - The Music Industry
- Unit 2 - Managing a Music Product
- Unit 4 - Music Composition
- Unit 5 - Music Performance

All units are coursework based with Unit 1 being the only unit which has an external examination.

Students are expected to perform regularly throughout the course on their chosen instrument. They will complete individual performances and group performances which will be marked using the Edexcel BTEC marking criteria. This allows our students to prepare for their final piece and continue to improve and raise their standard of playing and musicianship skills.

There are a variety of music clubs during lunch time and after school which students are expected to take part in as it will develop their music skills further.

We offer a wide range of instrumental lesson, including vocal lessons, which KS4 students are entitled to free of any cost as part of their course. These include:

- Drums
- Guitar
- Bass Guitar
- Keyboard
- Piano
- Flute
- Clarinet
- Saxophone
- African Drums

Music Extra- curricular clubs:

Our extra-curricular clubs include:

- Whole School choir: Wednesday Lunch Time
- Year 7 and 8 choir
- Year 9,10 and 11 Girls Choir
- Year 9, 10 and 11 Boys Choir (to be set up within the coming year)
- African Drumming Club
- Flute Ensemble - Thursday Lunch Time
- Rock Band
- Guitar Club

The Performing Arts department provides Drama, Music and Dance. Creativity within the Arts is at the very heart of Southchurch High School, developing self-esteem, confidence and valuable skills for life.

Staff Contacts:

Miss J Cassar

Email: jcassar@southchurchschool.com

Department Head of Performing Arts

Ms J Chapman

Email: jchapman@southchurchschool.com

Teacher in charge of Music